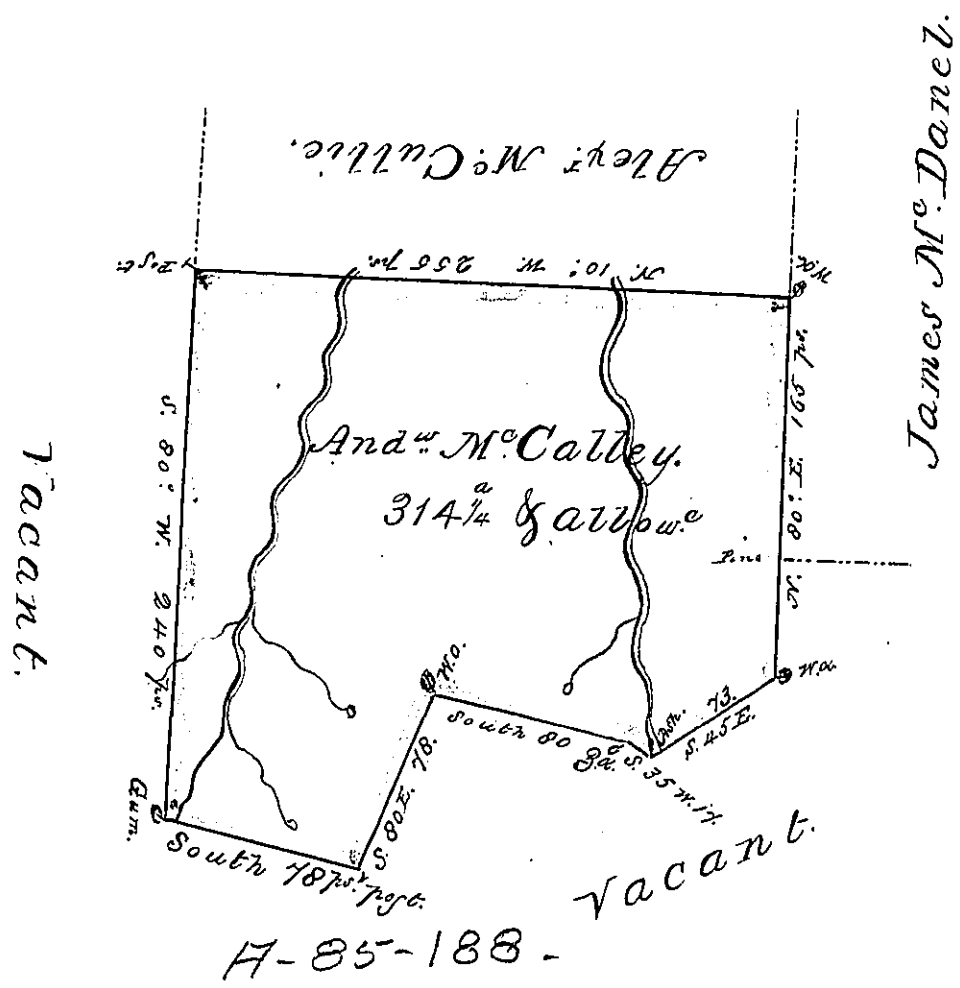


✓



A Draught of a Tract of Land Called Situate on the waters of Chesapeake about thirty Miles from Sunbury adjoining land Surveyed for James M^cDanel & others in the County of Northumberland Containing three hundred & fourteen acres & a quarter of an acre and the usual allowance of six p^{er} cent for Roads &c. Surveyed the 8th Day of May 1775 for Ananias M^cCalley in pursu-
ance of a Warrant Dated the 11th Day of March 1775.

by Chas. Stewart A.S.
John Lukens Esq^r Survey^r Genl.

Now in Mifflin Township

IN TESTIMONY that the above is a copy of the original remaining on file in the Department of Internal Affairs of Pennsylvania, made conformably to an Act of Assembly approved the 16th day of February, 1833, I have hereunto set my Hand and caused the Seal of said Department to be affixed at Harrisburg, this

Eighteenth day of July 1876

Wm. M. C. L. S.
Secretary of Internal Affairs